



Cluster
**Innovation
Centre**
University of Delhi

CREATION OF USER INTERFACE DESIGN OF THE WEBSITE & MOBILE APPLICATION FOR THE ANIMAL CAUSE

AUTHORS

Anshika

AFFILIATIONS

Cluster Innovation Centre, University Of Delhi, 110007, India
Mentor : Prof. Mahima Kaushik

ABSTRACT

This project contains the User Interface Design of "POUR SANS-VOIX" Website and Mobile Application built for the Animal Cause with some components like Community Panel, Animal Essentials, Guide Book, etc. These design basically holds the motto of an animal starter pack. I invested my time previously in a lot of UI/UX training programs through Internshala, Coursera, etc., but still there was a pile to explore in this field which can only be nullified with the experience only, this project is for fulfilling that section only.

INTRODUCTION

USER INTERFACE DESIGN & USER EXPERIENCE

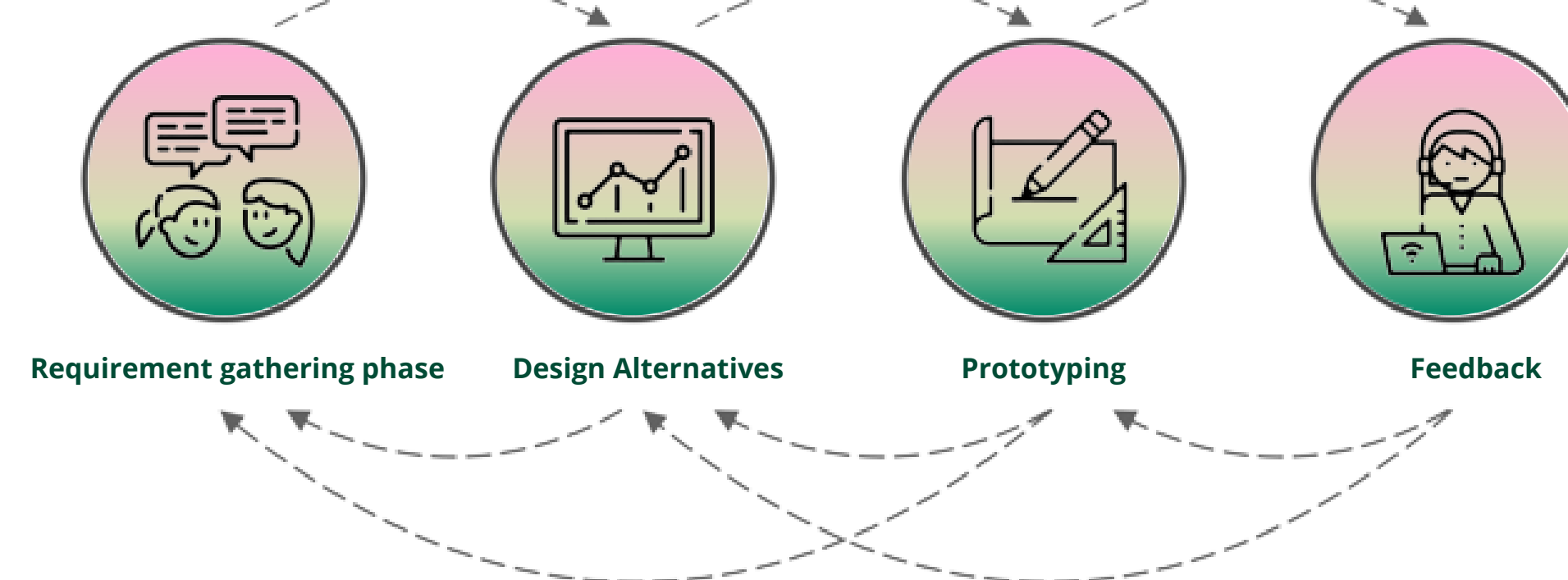
User interface design or user interface engineering is the design of user interfaces for machines and software with the focus on maximizing usability and the user experience. User experience focuses on having a deep understanding of users, what they need, what they value, their abilities, and also their limitations.

FIGMA SOFTWARE

Figma is a vector graphics editor and prototyping tool which is primarily web-based. The feature set of Figma focuses on use in user interface and user experience design, with an emphasis on real-time collaboration.

DESCRIPTION OF WORK

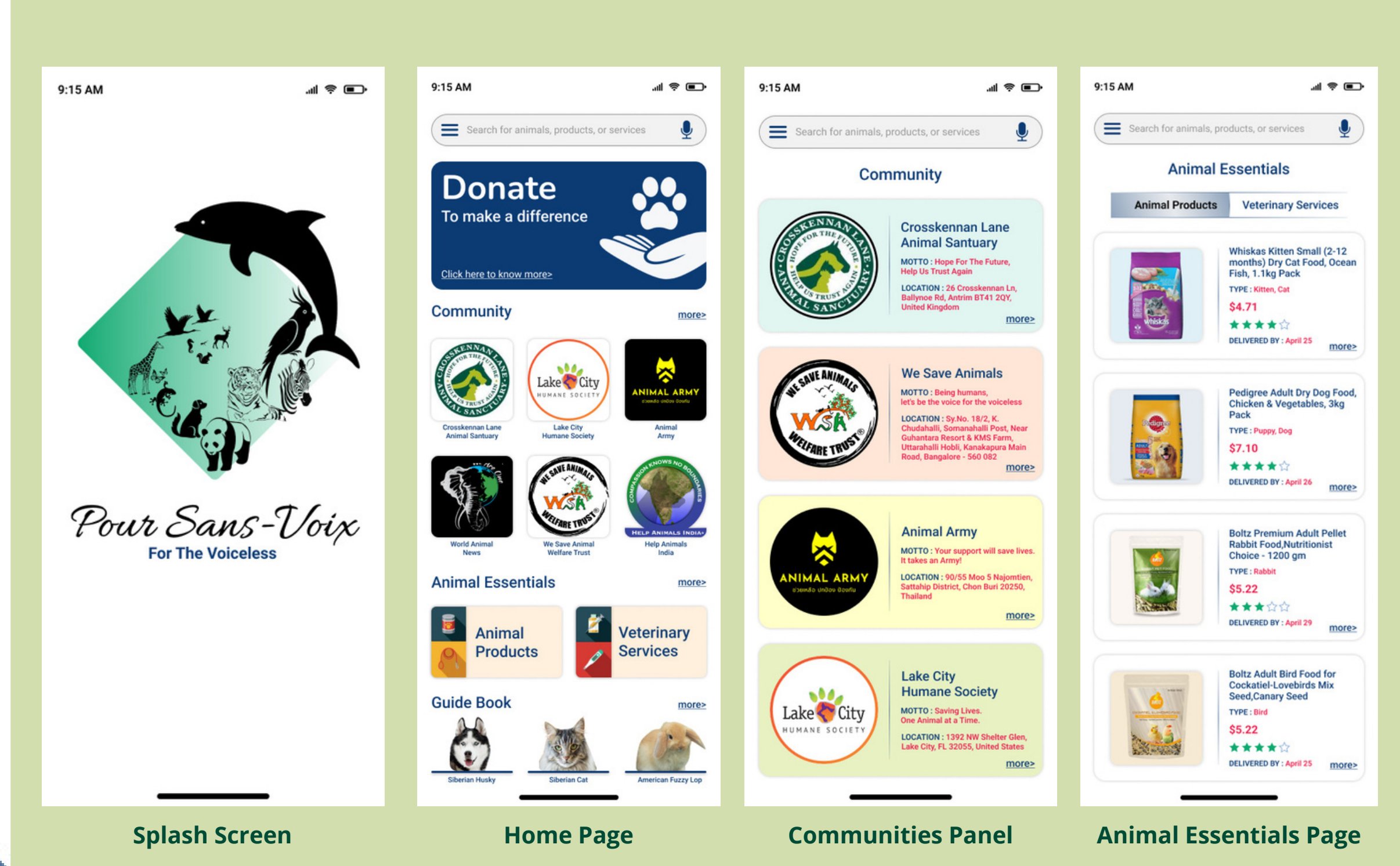
Depending on how specific you get, the UX process can entail a many phases but this project focuses on four primary phases.



IMPLEMENTATION & RESULTS

Implementation was done after the completion of the 2nd phase of the UX processes i. e., Design Alternatives, once the final design is selected you can start working on the screens and later on prototype them.

MOBILE APPLICATION SCREENS



WEBSITE PAGE



CONCLUSIONS

According to the research work conducted in the literature review section, no such application existed which consisted of animal essentials, guidebook, communities and panels like donation, adoption, reporting simultaneously at one place. So this was a good idea to put essential stuff at one place for the ease on user so that they shouldn't jump from one interface to another for the material required.

FUTURE DIRECTIONS

Concluding words will be that this project will help me in my future portfolio representation. I'll be uploading this project on the Behance platform where people from all around the world showcase and discover work. This project helped me to get the scenario of the real world as in how communities are dealing with the issues related to animals, their extinction, their abuses, etc. Seeing this kind of courage from the people out there gives me a motivation to provide anything from my side which can help in this direction.